

Haddenham Parish Council

ANNUAL PARISH MEETING 19th March 2026

**A YEAR IN THE LIFE OF THE
PARISH COUNCIL**



“SO WHAT IS A PARISH COUNCIL?”

We are:

- **A “local council” – bottom tier of local government & statutory body**
- **132 years old – 1894 Act of Parliament – separated church & civic**
- **1 of 171 local councils in Bucks; 10,000 in England - huge range in size of communities served – strength in diversity**
- **Independently elected – in our case 11 Cllrs (unpaid volunteers) and 8 staff – big welcome to Steph & Matt**
- **Not Bucks Council, nor the Parochial Church Council**
- **Only local council in Bucks to have NALC Gold Award**

“WHAT DOES THE PC ACTUALLY DO?”

- 1. We provide & maintain a range of facilities, buildings & services backed up by an asset management plan and long-term reserves**
- 2. We undertake projects – some examples coming up**
- 3. We are a statutory consultee for town planning**
- 4. We have “general power of competence” for “well-being”**
- 5. We manage 2 local charities and support 3 parochial charities**
- 6. We rely on the help of many wonderful volunteers**
- 7. Business management: 5-year business plan, action plan & budget**
- 8. We are NOT responsible for: highways, potholes, parking, planning decisions, schools, policing, managing peoples’ children or pets! (But we do try to influence our local authority)**

SOME CURRENT PROJECTS

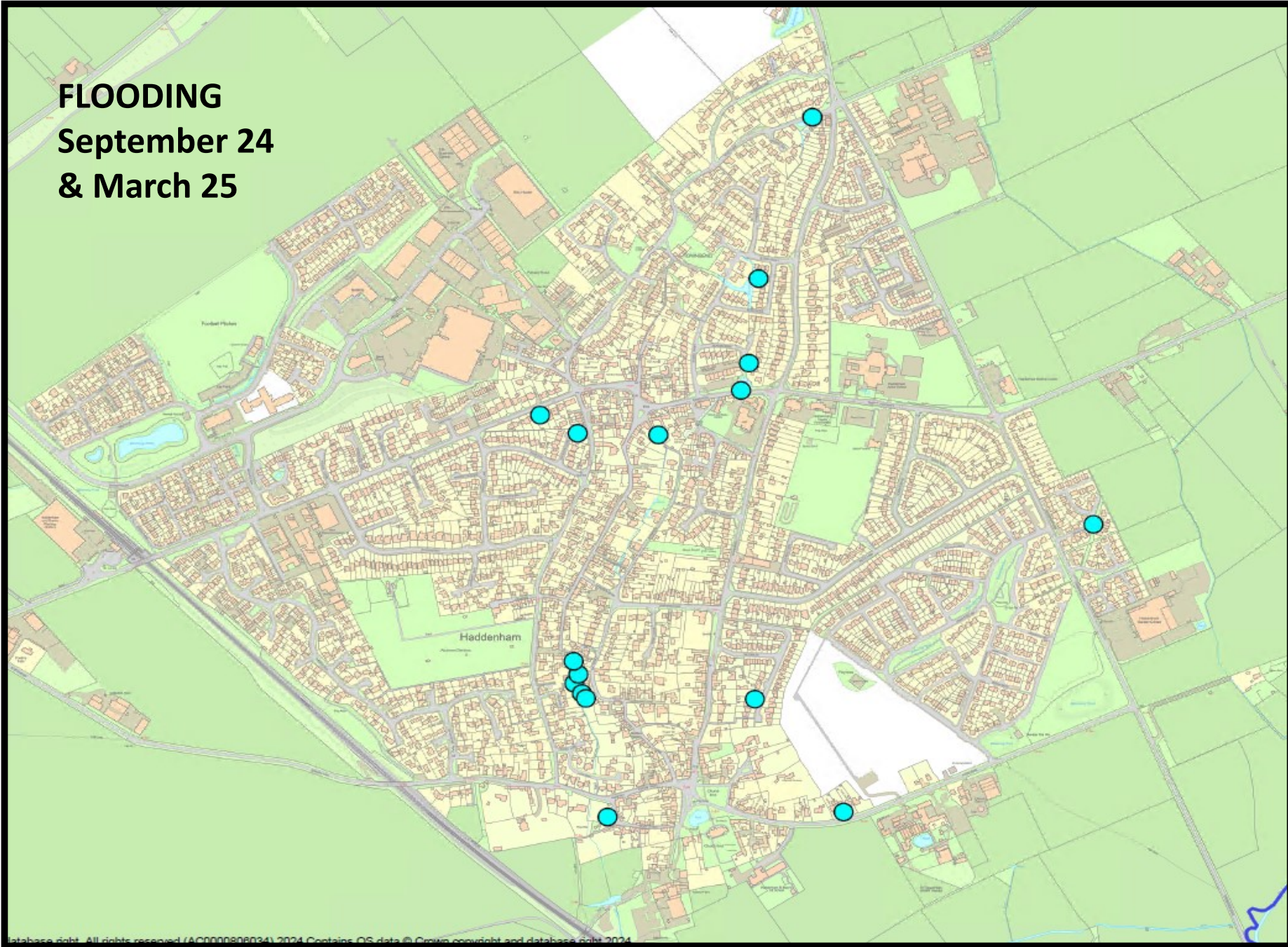
- **Settling in and equipping our grounds & assets team**
- **“Future Haddenham” & LP4B response**
- **Extending Banks Cottage for the Dentist**
- **Cricket pavilion tender and build**
- **Burial ground layout, management and resourcing**
- **Village Hall refurbishment**
- **“Streetscape” outcome: Thame Rd crossing by the station**
- **Flood resilience**
- **Church End pond borehole**
- **Haddenham Foodsavers & Warmer Homes Assessments**
- **Local Plan for Bucks**



Extending Banks Cottage



FLOODING
September 24
& March 25



Community Action - Tacks Pond

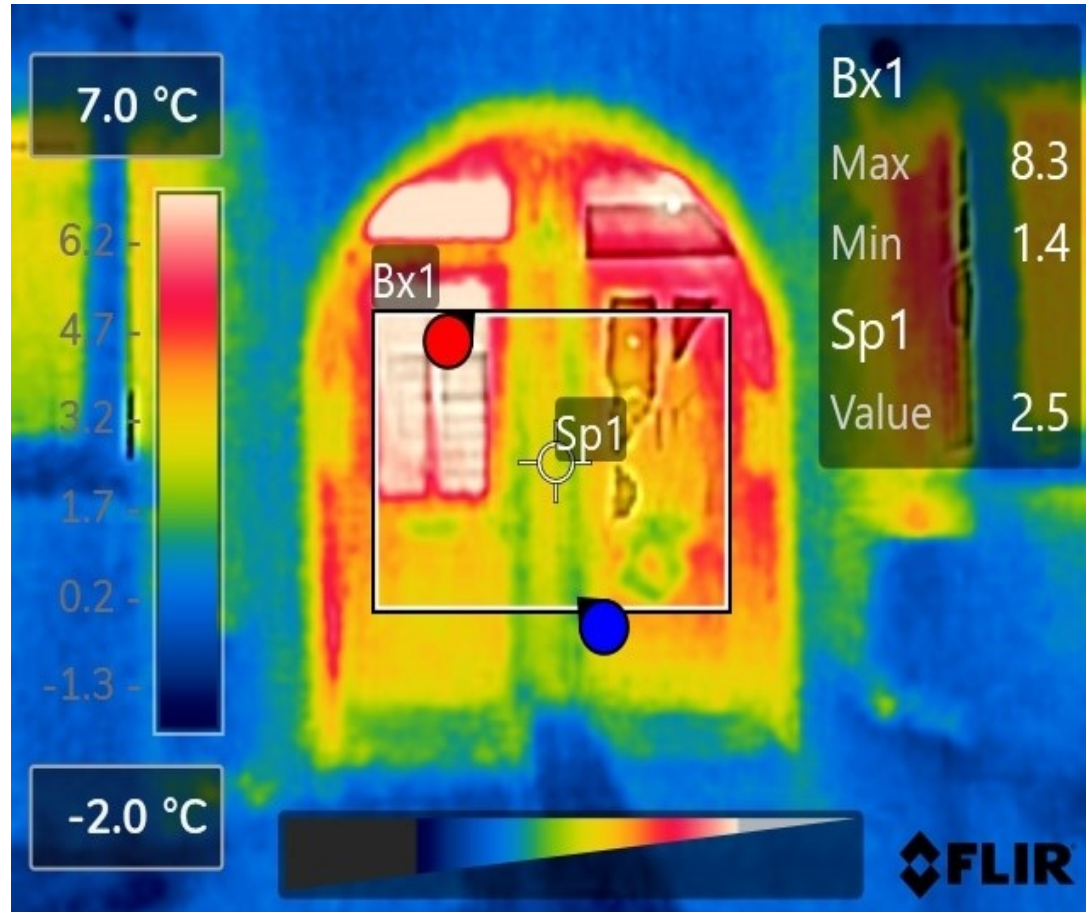
A private area behind several properties became overgrown with vegetation, fallen and overhanging trees and silted up.

Work carried out over many years.



Warmer Homes Assessments

Haddenham Foodsavers



FREE WORKSHOP

HADDENHAM Parish Council

LOVE FOOD, HATE WASTE
Make your food go further: for your pocket, for our planet - learn how to reduce food waste!

7 Years Old +

Haddenham Airfield Pavillion **SATURDAY 7TH MARCH**

FIRST COME FIRST SERVED
16:00-18:00
EVERYTHING IS PROVIDED FREE OF CHARGE

- Free, hands-on workshop for families.
- Learn how to reduce food waste in

Detailed description: A promotional poster for a 'FREE WORKSHOP' titled 'LOVE FOOD, HATE WASTE'. It features the Haddenham Parish Council logo, a QR code, and an illustration of a family (mother, child, father) preparing food. The workshop is held at Haddenham Airfield Pavillion on Saturday 7th March from 16:00-18:00. It is a first-come, first-served event where everything is provided free of charge. The target audience is 7 years old and above. The poster includes a list of bullet points: 'Free, hands-on workshop for families.' and 'Learn how to reduce food waste in'.

Thank you to our Volunteers

- Allotments
- Community Orchard
- Community Speedwatch
- HaddSWAC
- Litter Pickers
- Parish Cllrs (PC business & trustees of 2 PC charities)
- ReLeaf
- Snakemoor
- Sports (& Social) Clubs
- Trustees of 3 Parochial Charities
- Youth Club helpers
- Zero Carbon Haddenham

Our
Gardeners
Break time
at
Snakemoor





Our Speedwatchers



Burying a
time capsule

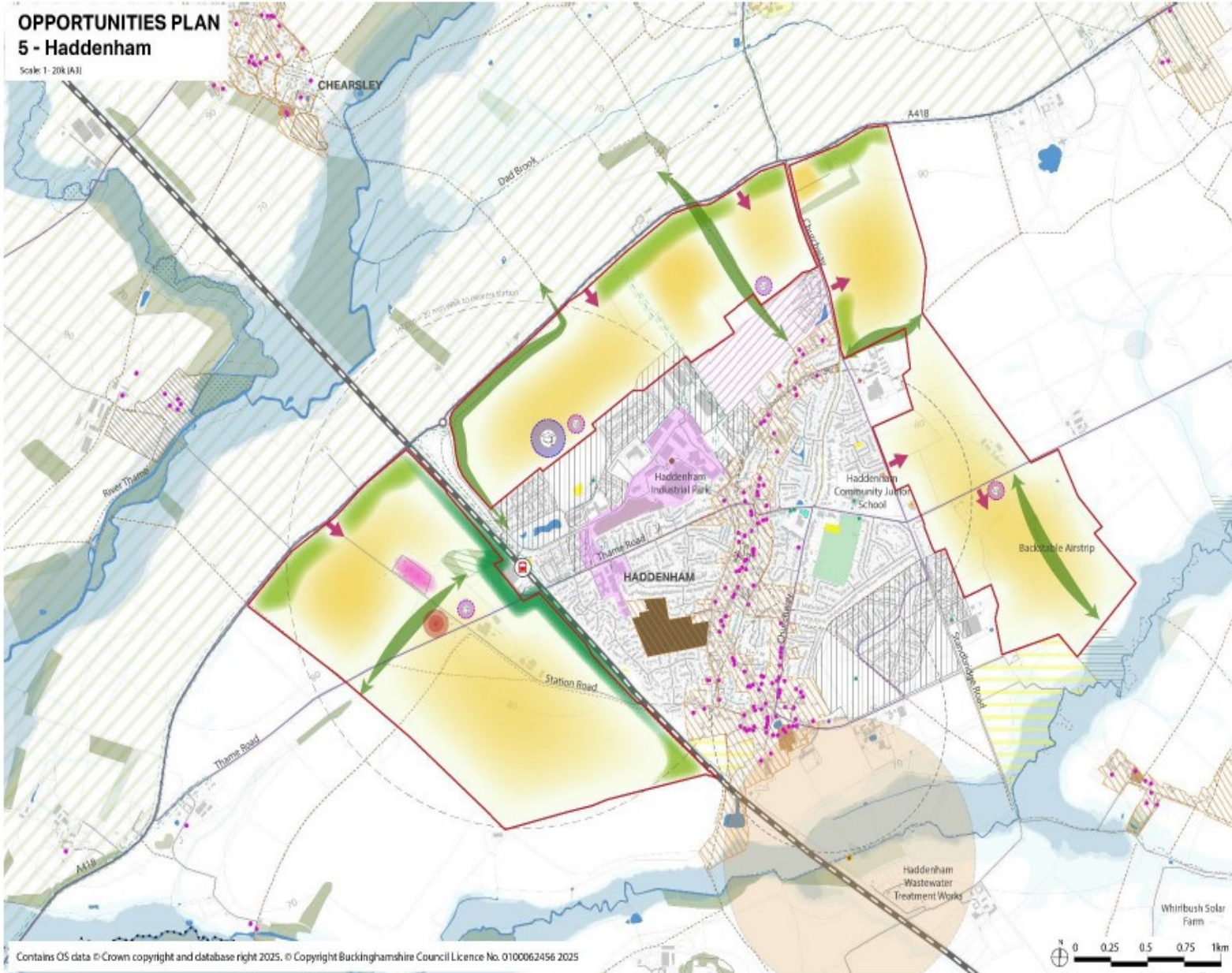
Haddenham
Park Care
Home



71 planning applications reviewed including:

- **Churchway (Redrow) 273 homes**
- **Churchway (Greencore) 89**
- **Lower Rd (Rectory) 86**
- **Land at Station Rd 192**
- **Airfield (north) c.700 plus primary school**





- KEY**
- NESS Growth Location
 - Key Local Centre
 - Retain existing use
- Existing Opportunity**
- Rail and primary/secondary school catchment
 - Employment land-use
 - ELR site
 - Bus routes
- Potential Opportunity**
- Mixed-use/residential development
 - Green space
 - Natural and Semi-Natural Greenspace (SANG)
 - Employment development
 - New connection
 - Mobility hub
 - Green buffer along the railway as noise mitigation
 - Green corridors
 - Future station (location approximate)
 - Primary school
 - Secondary school
 - Local centre
 - Access to development

Contains OS data © Crown copyright and database right 2025. © Copyright Buckinghamshire Council Licence No. 0100062456 2025