



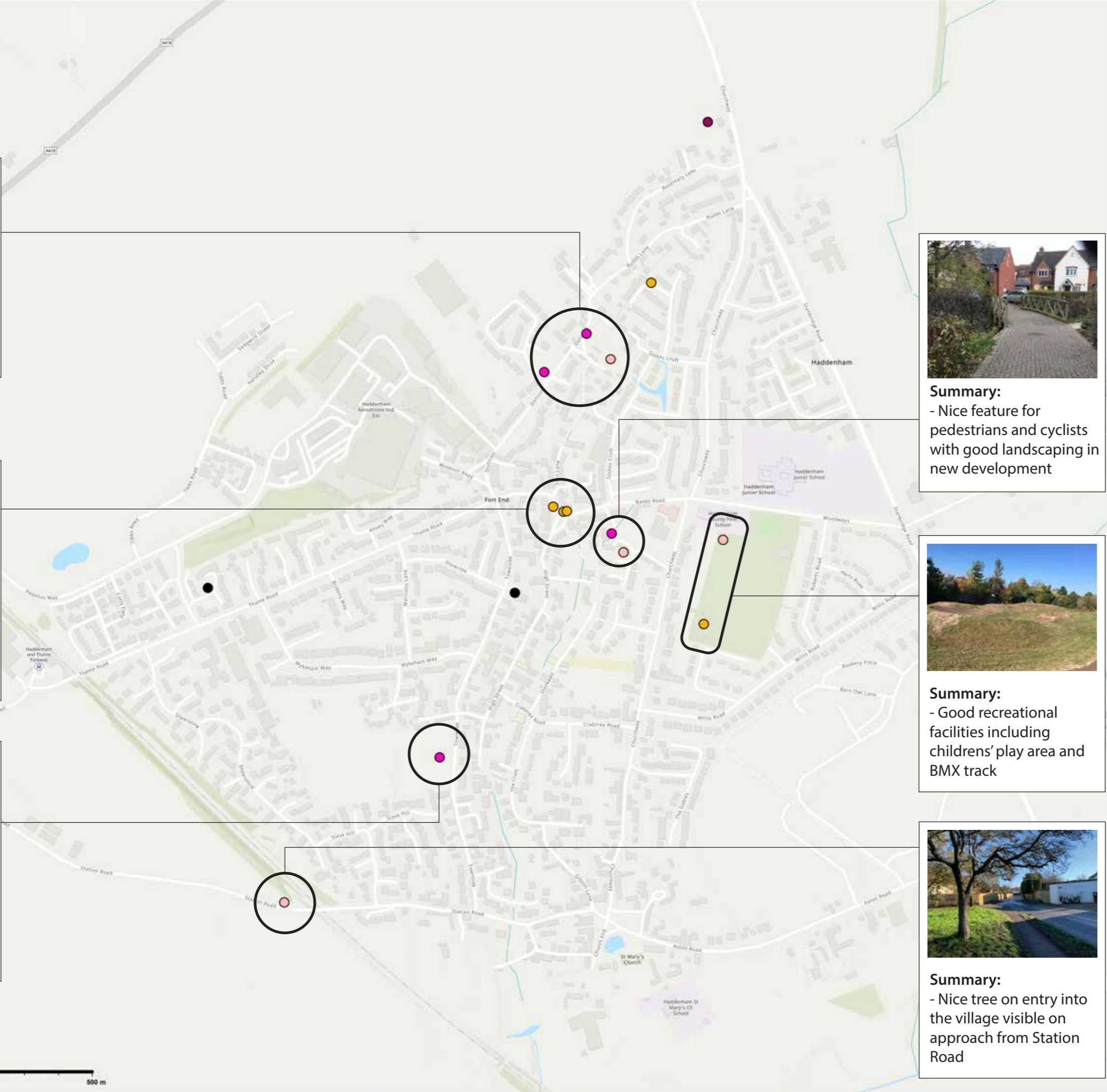
**Summary:**  
- Good sized area of open space



**Summary:**  
- Segregated cycle track has slowed vehicle speeds.



**Summary:**  
- Community allotments are an important village asset.



**Summary:**  
- Nice feature for pedestrians and cyclists with good landscaping in new development



**Summary:**  
- Good recreational facilities including childrens' play area and BMX track



**Summary:**  
- Nice tree on entry into the village visible on approach from Station Road

- Something I Like**  
What does your suggestion or comment relate to?
- N/A
  - Buildings
  - Nature and water
  - Streets and public spaces
  - Streets and public spaces / Buildings
  - Streets and public spaces / Nature and water

the GIS user community  
Geodastyrrelsen, Rijkswaterstaat, GSA, Geoland, FEMA, Intermap and USGS, NGA, NASA, CGIAR, N Robinson, NCEAS, NLS, OS, NMA, GeoTechnologies, Inc., METI/NASA, USGS, Sources: Esri, Airbus DS, Esri Community Maps Contributors, Esri UK, Esri, HERE, Garmin,

**PJA** The Aquarium  
Kings Street  
Reading  
RG1 2AN  
T. 0118 956 0909

CLIENT  
**HADDENHAM PARISH COUNCIL**

PROJECT  
**Haddenham Streetscape Issues & Opportunities**

TITLE  
**Something I Like**

FIGURE NUMBER	REVISION		
01	A		
SCALE	DRAWN	REVIEWED	DATE
A3 @ 1:3,500	RW	AK	10/02/2022