



Key Issues:

- Poor facilities for pedestrians and cyclists
- Unsafe crossing point



Key Issues:

- Poor condition
- Narrow footways
- Junction with Pegasus Way is too wide. Difficult to cross and encourages high vehicle speeds



Key Issues:

- Poor condition
- Poor connectivity to the station for pedestrians and cyclists



Key Issues:

- Overly dominated by vehicles and car parking.
- Poor facilities for pedestrians and cyclists



Key Issues:

- Unsafe crossing point
- Busy route for school children



Key Issues:

- High traffic speeds
- Poor facilities for pedestrians and cyclists



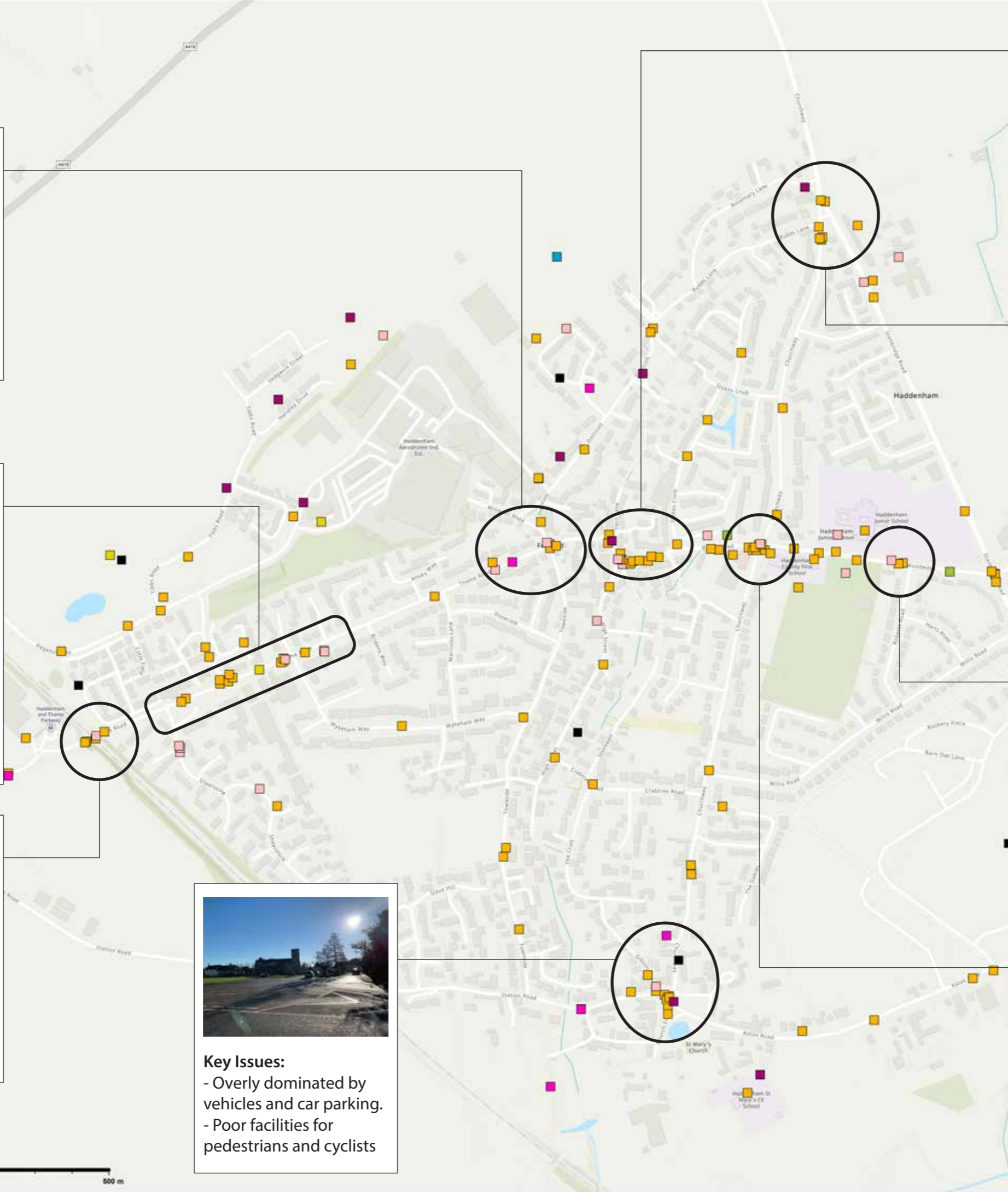
Key Issues:

- Congestion caused by school and drop off and pick up time



Key Issues:

- Confusing double roundabout.



An Issue or Something I Would Change
 What does your suggestion or comment relate to?

- N/A
- Buildings
- Buildings / Nature and water
- Nature and water
- Streets and public spaces
- Streets and public spaces / Buildings
- Streets and public spaces / Buildings / Nature and water
- Streets and public spaces / Nature and water

the GIS user community
 Geodastyrrelsen, Rijkswaterstaat, GSA, Geoland, FEMA, Intermap and USGS, NGA, NASA, CGIAR, N Robinson, NCEAS, NLS, OS, NMA, GeoTechnologies, Inc., METI/NASA, USGS, Sources: Esri, Airbus DS, Esri Community Maps Contributors, Esri UK, Esri, HERE, Garmin,

PJA The Aquarium
 Kings Street
 Reading
 RG1 2AN
 T. 0118 956 0909

CLIENT
HADDENHAM PARISH COUNCIL

PROJECT
Haddenham Streetscape Issues & Opportunities

TITLE
An Issue

FIGURE NUMBER	REVISION		
01	A		
SCALE	DRAWN	REVIEWED	DATE
A3 @ 1:3,500	RW	AK	10/02/2022

